

# MAI TĀMAKI

TĀMAKI IS AN AWESOME PLACE TO LIVE



## JOBS HUB

.....

APPRENTICE  
FOLLOWS IN FAMILY  
FOOTSTEPS

## ARTS FESTIVAL

.....

BRADLEY  
LANE

## HUGE SUCCESS

.....

AWARD FOR  
TĀMAKI HOUSING



# TĀMAKI



With a rich history, inclusive community spirit and central location, Tāmaki stands out for its wealth of potential; both of people and place. It has great transport links and is only 12 minutes from the CBD by train.

It has two town centres, Sylvia Park Shopping Centre on its doorstep and safe swimming beaches nearby. Take a look through Mai Tāmaki to discover why this is a great place to live, work and raise a family.

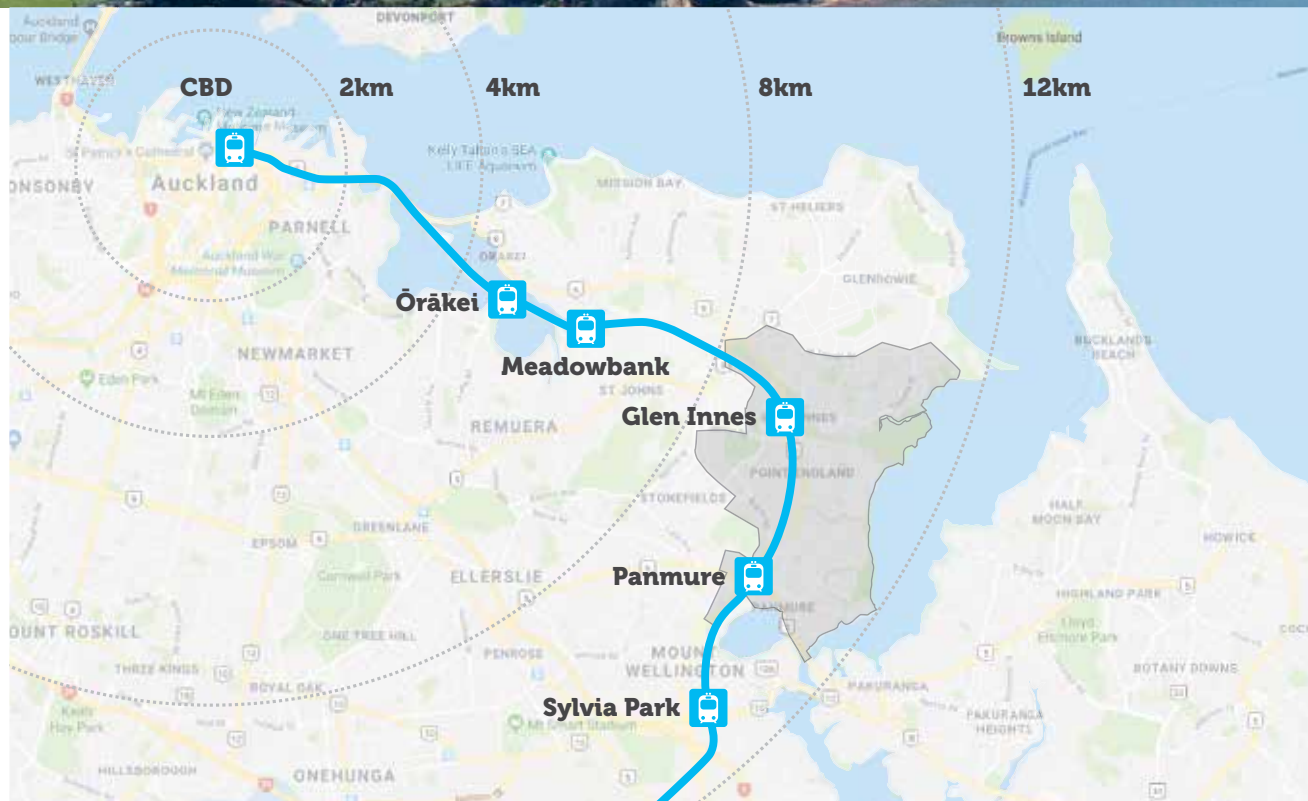


**AUCKLAND CBD**

**MISSION BAY**

**KOHIMARAMA**

**ST HELIERS**





# WELCOME



John Holyoake

If you're from Tāmaki, chances are you already know it's an awesome place to live.

Sure, there are some challenges, but the opportunities developing for everyone in Tāmaki are really exciting.

Local events like the Te Ara Rama Matariki Light Trail held recently in Glen Innes are the perfect reason for whānau to meet up and even get to know their neighbours.

I really enjoyed taking my family along and checking out the fantastic light installations (featured on p10-11), attended by thousands of people throughout the week.

The Tāmaki community has grown in recent years with more than 500 new homes completed as part of the redevelopment programme so far. It's given over 150 Tāmaki whānau the chance to leave the older state properties that we're gradually replacing and move into brand-new, warm, dry homes, all while staying local.

And for those families looking to buy their own home, there's also opportunity. Tāmaki Regeneration's shared home ownership pilot – where we take a share in the property, which families pay off over time – is underway.

It's also exciting some of the 220 local people who have found jobs in the last year through the Tāmaki Jobs and Skills Hub are helping rebuild the area's housing stock, like plumbing apprentice Max Leuila who is following in his granddad's footsteps (story p6-7).

Keep an eye out for more opportunities to get involved in the regeneration programme via [www.tamakiregeneration.co.nz](http://www.tamakiregeneration.co.nz) or [www.facebook.com/shapingtamakittogether](https://www.facebook.com/shapingtamakittogether)



John Holyoake,  
TRC chief executive

## HIGHLIGHTS

8



### Fun at the fair

Youth from Ruapotaka Marae played a huge role in the Maybury Park Fair.

10



### Magical Matariki

The Te Ara Rama Matariki Light Trail lit up Glen Innes.

16



### Tāmaki tour

Historical sites were visited on a special tour of Tāmaki.

20



### Regeneration update

Find out how housing development is progressing in Tāmaki.

**Cover photo** Spectacular lights and fireworks were on show in Glen Innes during July as part of the Te Ara Rama Matariki Light Trail.

**Opposite** Siraya Smith adds some colour to the wall of the Tāmaki Inbox during Bradley Lane Illuminated, with a bit of help from Saphine Haumaha.

# PLUMBING APPRENTICE FOLLOWS IN GRANDPA'S FOOTSTEPS

.....

Max Leuila is building a successful career in the plumbing industry thanks to help from the Tāmaki Jobs & Skills Hub.



**New plumbing apprentice Max Leuila almost went down a completely different career path.**

He had thoughts of going to university and studying civil engineering, but that all changed when he discovered the Tāmaki Jobs & Skills Hub and Tāmaki College Trades Academy.

Max's decision to connect with the academy, and the hub, was strongly influenced by his family connections to the trades.

"I did some renovations with my grandpa, who was a plumber, which made me change my mindset about what I wanted to be.

"So, I joined the building and construction programme

at Tāmaki College, which made me want to do plumbing.

"I wanted to challenge myself to do something new."

The hub helped Max get his driver's licence by putting him through a defensive driving course and connecting him with Stately Plumbing.

But before he received the job offer, Max did the Tāmaki Jobs & Skills Hub's pre-employment course, alongside many of his trades academy counterparts.

"The course included interview skills, prepping your CV and then we had one on one sessions with our tutor.

"It helped me a lot because I was able to build more confidence in myself going to the interview after doing that prep course. That course made me feel really good and more confident about myself."

The support continued after he got the job, with catch-up sessions at the Tāmaki Jobs & Skills Hub.

"They were a really cool team and made me feel comfortable."

As part of his trades academy course, Max spent time at Oceania Careers Academy in Mangere, helping prepare him for early morning starts and building site safety.

The Glen Innes local's apprenticeship will last four to five years, before becoming a fully qualified plumber, with 7.30am starts and work all around the city big parts of the job.

Tāmaki College trades academy options include building and construction, catering and hospitality and automotive options.

Director of the Tāmaki College Trades Academy Rob Thomas says he's excited the school has developed a positive relationship with the Jobs & Skills Hub.

"We're thrilled the hub has come on board to help us out by placing our students in apprenticeships and pushing them to get their learner's licence."

He hopes to expand the relationship beyond building and construction to include its hospitality and automotive students.

"We could open the gateway to all of those students as well."

Tāmaki Jobs & Skills Hub manager Alice Taupau says it is great to be helping local students fulfil their dreams.

"It's always satisfying to help the fantastic students from Tāmaki College into work.

"Developing a relationship with the school's trades academy has been a real positive for us and we look forward to helping more of their jobseekers in the future."

### MAX HAS WHAT IT TAKES



Rob Thomas

Director of the Tāmaki College Trades Academy Rob Thomas says Max is one of the programme's outstanding students.

"He's successful because he's got the demeanour of a student who is focused and switched on.

"Max has a positive attitude and wants to reach for the stars.

"When I'm driving home, I see many of my boys in their yellow, high-vis and think 'they're sorted.'"

## TĀMAKI JOBS & SKILLS HUB

.....

- More than 500 Tāmaki people have found work through the Tāmaki Jobs & Skills Hub. Twenty-six of these workers have been helped into building apprenticeships.
- The Tāmaki Jobs & Skills Hub has been running since 2013. It helps job seekers get work ready by offering support with writing CVs, providing career advice, applying for jobs online, driver licence training, job matching, and mentoring.
- The range of industries include construction, logistics, manufacturing, hospitality, retail and administration, among others.
- In the last financial year, the hub supported 220 local people into work.
- Over the same period, 130 local people gained a driver's licence, 16 completed professional training and 12 entered into further education through the Tāmaki Jobs & Skills Hub.

### Visit Us:

54 Mayfair Place, Glen Innes

### Open:

Monday to Friday, 9am-3pm

### Email:

jobshub@tamakiregeneration.co.nz

### Phone:

0800 JOB HUB

**TĀMAKI**  
JOBS & SKILLS HUB



Jordan Makea and Christian Makea

# YOUTH TAKE LEAD AT MAYBURY EVENT

.....

Bringing the Glen Innes community together through local events is a clear goal on Christian and Jordan Makea’s radar.

The brothers from Ruapotaka Marae’s Te Āmiorangi youth group had the opportunity to collaborate with Tāmaki Regeneration (TRC), event management company Open Fort and other local young people to create the Maybury Park Fair.

The event explored how a new green space that will eventually become part of Maybury Reserve could be used through a variety of different activities.

“Youth have always had a voice but being at the forefront with Tāmaki Regeneration and Open Fort felt we were more like the facilitators, rather than just helping,” Christian says.





There was plenty of fun to be had at the Maybury Park Fair in Glen Innes.

“We were facilitating what everyone was doing. It was definitely a new experience for both of us.”

The opportunity for the brothers to get involved came about through Tamaki Regeneration’s relationship with Ruapotaka Marae.

“The planning aspect was amazing. We had an opportunity to ask ‘what do you want to see out there?’” Christian says.

“The youth revolved around the idea of how can we make this the best fit for the event?”

“We are proud of what we did for our community.”

Following the workshopping of ideas, they had three different areas of focus – sports, carnival and a graffiti wall.

On the day itself, Jordan ran the carnival-style games, while Christian looked after the sports-based activities.

“It was a huge opportunity and a privilege to be a part of the event,” Jordan says.

“The event itself was awesome. We got so many positive responses. Everyone was on

board with what was happening.”

Jordan says he enjoyed running the carnival games for local children.

“All the kids were loving it.”

And being involved in the Maybury event was an eyeopener, Jordan says.

“There’s plenty of logistical stuff to think about, getting the day sorted and organising people.

“There’s a lot behind that success.”

TRC regeneration and placemaking general manager Joanna Brain says it’s fantastic to work with the community when organising local events.

“Working with the community on these events means they are highly engaged in creating activities that they really want to be involved in.

“It’s exciting to see people come along and enjoy themselves, which makes everyone’s hard work worthwhile.”

### **COLLABORATION THE KEY**

.....

Local events like the Maybury Park Fair help break down barriers

and bring everyone together, Christian says.

“If the community had more things like this, it would only help strengthen community engagement.

“Knowing that Tāmaki Regeneration is keen to help is what makes us feel able to call on that support if we need it.”

Christian says it was also a learning opportunity that encouraged the community to engage with a new space.

“It inspired our youth and made them think about what else they can do.”

That inspiration includes a gala day organised by Te Āmiorangi at the marae in June.

“We’ve lived here all of our lives, so if we can make a change in the community, it’s great to be at the forefront.

“It’s a positive for the community.”

**\*The Maybury Park Fair is one of several events set to run in Tāmaki leading into summer. Keep an eye out for the next issue of Mai Tamaki and on our Facebook page to find out more.**



# COLOURS GALORE AT MATARIKI CELEBRATIONS

.....

The Te Ara Rama Light Trail illuminated the heart of Glen Innes during this year's Matariki celebrations.

The sixth annual light trail transformed Maybury Reserve into a magical landscape. The fairylight walkways drew inspiration from the nine stars of Matariki to celebrate the Māori New Year. More than a week's worth of activities were held, with the finale on Saturday, July 13 including a spectacular fireworks display set to Māori and Pasifika music.





Photos: Yolanda Gao

# THE CORN MASTER

.....

Amaize popcorn is manufactured right here  
in Tāmaki on Panmure’s Queens Rd.



Amaize's Arif Master

Flavoured popcorn is becoming more and more popular these days. It's a regular at food festivals across Auckland and walking down Queen St in central Auckland you'll often come across the tempting aroma of sweet, fresh popcorn.

Arif Master, founder of Amaize popcorn, started his journey towards producing flavoured popcorn with another corn product – fresh steamed sweetcorn flavoured with spices.

"I came here from India in 2006 with a business in mind I had seen in other parts of the world," he says.

He finally got started in 2011 with a product he called Kiwi Corn in a Cup.

The first market he went to was a gala at St Marks School in Pakuranga. It was a great success, as spiced, steamed sweetcorn is a well-known product throughout Asia.

From there the business grew, and he and his wife Mahera got a following at events and shows across Auckland.

"This was going well, so we thought, let's have a shop."

They set up in a small shop on Panmure's Queens Rd, with a larger space out the back for manufacturing.

When they first got started, people would come to Panmure especially to buy their steamed sweetcorn.

But they soon realised selling the product in a shop rather than at markets was not viable as there was a lot of wastage.

Popcorn, which could be kept for up to six months, made much more sense.

At the end of 2016, Arif decided to give up the street front shop,

keep the factory out back, and move into the wholesale market.

Arif also works as a merchandiser for supermarkets, so he used that experience to grow the wholesale business.

"I got a break in Fresh Choice Glen Eden in 2017," he says.

From there, he has built up to supplying more than 15 stores, including Pak'nSave in Glen Innes and Botany.

"All my contacts were developed from my job [in merchandising]. They try to support me as much as they can."

For now, Arif and Mahera still have part-time jobs. Arif works four nights a week from 3am to 8.30am, and Mahera works in retail three days a week. They do all the manufacturing themselves, coming in to the factory several times a week to prepare whatever flavours are running low.

Of the 38 flavours the couple produce, churro caramel and salted caramel are their most popular.



They've split the workload down the middle and take responsibility for producing two categories each. "Candied and gourmet corn is her department, flavoured and savoury is my department," says Arif.

The couple want to grow their gourmet category and are aiming to supply all the high-end grocery stores in Auckland.

One day soon, they hope they can leave their part-time jobs and focus all their energies on their business. "Within a year we should be able to do that."

Amaize popcorn is available online at [amaize.co.nz](http://amaize.co.nz) and at stores throughout Auckland, including Pak'nSave Glen Innes.





# **NEW LIFE GIVEN TO NATIVE TIMBER**

.....

Native timber from a former state house in Tāmaki Regeneration's (TRC's) Derna-Tobruk development in Panmure has been repurposed as part of a beautiful new floor.

Warren Hurst from Eco Demo, in partnership with TRC's demolition contractor Union Demolition, carefully removed timber from the house.

Warren says it is fantastic to see the wood become part of a new build in Auckland.

Often it is difficult to find out where the recycled wood ends up.

But in this case the flooring manufacturer who bought the timber was able to follow it through to its new home.

"Once milled and refinished, the wood became a very high-end new floor. I think this is a real success story and it is great to see," Warren says.

"Much of the native timber in the old state houses is beautiful heart timber with lovely grain.

"These timbers came out of New Zealand native forests and seeing them wasted is a tragedy. They are genuinely beautiful timbers and seeing them reused and put back into houses is really quite emotional."

Using sustainable building practices is an important part of

TRC's development programme – and that is continuing now the organisation is partnering with HLC to manage relationships with developers.

Most of the native timber found in former Tāmaki state houses is matai, tawa and rimu.

Pilot projects to reuse selected materials are underway as part of the redevelopment programme, which includes recycling native timber from former state houses in Point England's Hinaki development.

The timber will be used to create extensions to three existing two-storey houses in the Line-Epping development, Glen Innes.

Once finished, these houses will be sold on the open market.

Recycling materials from demolished houses is another important factor, with contractor Union Demolition taking waste from demolished houses to recycling and waste services company Green Gorilla.

Green Gorilla diverts approximately 85 per cent of that waste from landfill. This includes recycling items like steel and cardboard.

Some building materials are also repurposed and turned into fertiliser or woodchip for fuel at Golden Bay Cement in Whangarei.

Other materials are being used to rehabilitate a former coal mine in Huntly and turn it back into green pasture.

Concrete from TRC demolition sites is recycled at an Auckland quarry. It is crushed and processed for use in basecourse, driveways, drainage and compacted fill for building sites.

TRC regeneration and placemaking general manager Joanna Brain says houses are also occasionally relocated, depending on suitability.

"Most state houses in the area are cold, damp houses that are past their use-by-date. We're replacing them with new warm, dry homes.

"There are several state housing types in Tāmaki with features that are indicative of the era they were designed.

"In certain cases, these features are worth preserving for future generations."



Native timber for the new floor was taken from a house like this.



# TĀMAKI HISTORY COMES TO LIFE ON CULTURAL TOUR



Some of the most significant moments in Tāmaki history were revisited during a recent tour of the area.







Pita Turei

The tour, which started and finished at Ruapotaka Marae in Glen Innes, included a trek up Maungarei (Mt Wellington), offering impressive views of the city against a historical backdrop of how strategic the maunga (mountain) was in the past.

It offered views of the entire region, with tribal activity often visible from the summit.

The welcoming of visitors to the former pa site, battles fought with muskets and the revolutionary introduction of the easily-grown potato were all covered by the speakers.

The cultural tour also stopped at Te Waipuna a Rangiatea – a hidden spring off Mt Wellington Highway.

Tāmaki Regeneration Company’s (TRC) Community Engagement team organised for members of its Community Liaison Committee (CLC) to join the

tour, while Pita Turei (Ngāi Tai Ki Tāmaki, Ngāti Paoa, Ngā Rauru Kīhahi), Taiaha Hawke (Ngāti Whātua Orākei) and Papa Tautoko Witika (Ngāti Whātua), provided a historical narrative at several important spots.

Participants were invited so they could come together and experience local history from a Māori perspective, and balance that alongside changes happening in Tāmaki as part of the regeneration programme.

Tāmaki Regeneration Pasifika staff led an A’va ceremony at the end of the tour to acknowledge the Pacific ancestors who travelled to the area and a shared connection with the deity Mataaho.

TRC Community Liaison Committee member Deborah Misiuepa says the tour provided her with “a great historical foundation to preserve and

be considerate of in future development”.

The committee acts as a link between Tāmaki Regeneration and the community.

Ruapotaka Marae manager Georgie Thompson says its Facebook post about the tour generated “a massive amount of interest from many local community members wanting to participate in this type of activity to learn about local Māori history”.

TRC community engagement manager SJimmy Fransen says the tour was a fantastic way for CLC members and TRC whānau to understand the importance of connecting with Tāmaki’s deep historical roots.

“Tāmaki is a quickly developing area, but often remembering our past can offer new perspectives on where we are headed.”



# BRADLEY LANE LIGHTS UP

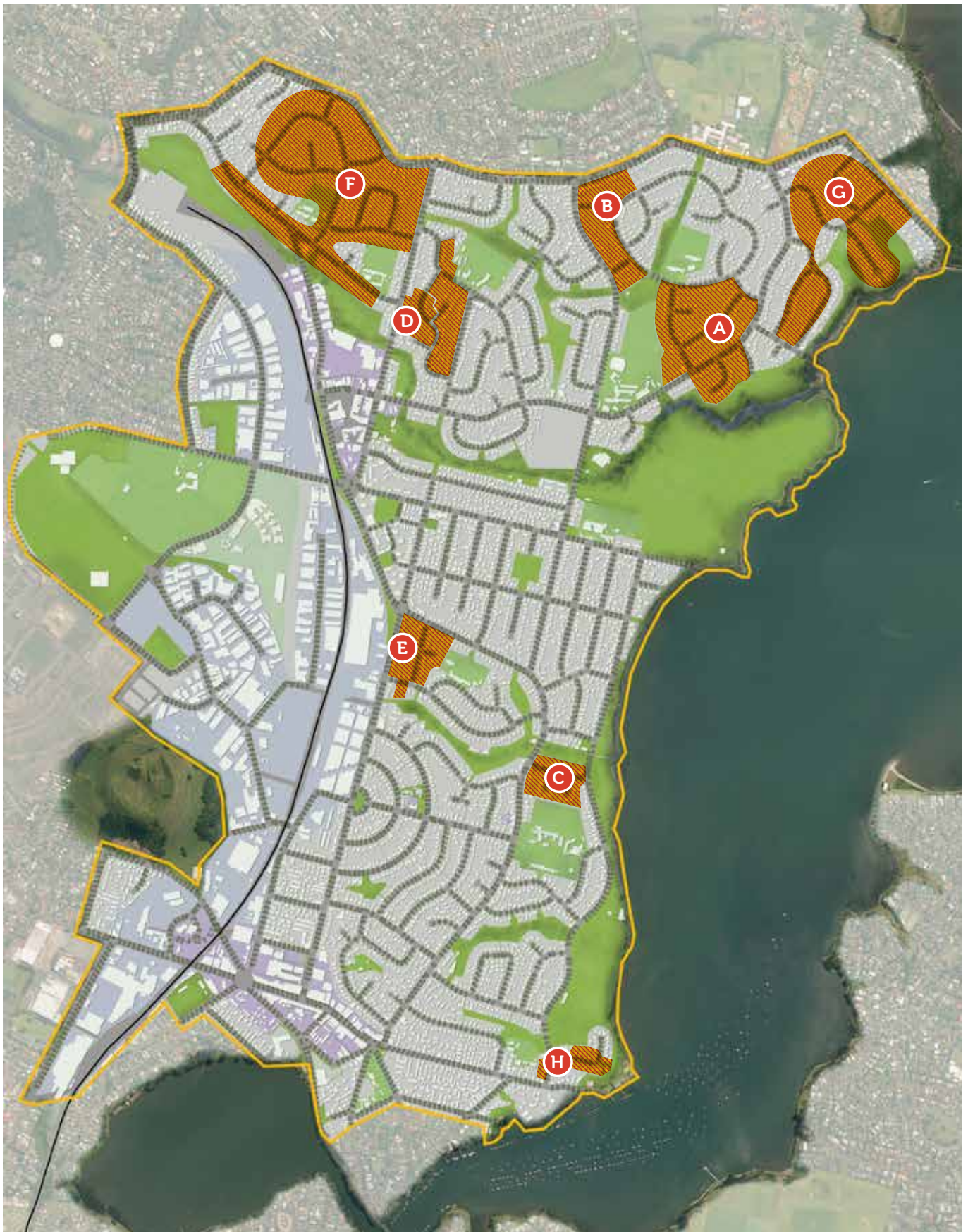


Bradley Lane lit up the streets of Glen Innes with fantastic light shows and cultural performances.

The Good, The Bad Charitable Trust ran the street arts festival for the fourth year in April. A number of organisations were involved in the event, including Tāmaki Regeneration.

A Tāmaki container was lit up and hosted an exhibition of before and after photos of Glen Innes' walls that feature murals. The container also included some graffiti drawing walls for interactive play.







# REGENERATION UPDATE

.....

TRC takes a neighbourhood-by-neighbourhood approach to understand the specific needs, opportunities and challenges of each area and the families who live there. Development work is well underway in Glen Innes, with early construction activities also starting in Pt England and Panmure.

We understand construction works can be very disruptive. We are committed to working with the local community and will make sure residents are informed about what's happening at each stage of the programme.

Visit the neighbourhoods and developments page for more information at: [tamakiregeneration.co.nz](http://tamakiregeneration.co.nz).

## GLEN INNES

.....

### Fenchurch neighbourhood A



About 400 new homes will be built in the Fenchurch neighbourhood in the next two years.

More than 200 houses, including over 80 state homes, have been completed so far.

The Housing Foundation completed 12 new homes in Fenchurch recently up the top of Sunnymead Road on the western side. Construction has begun on more than 50 homes on sites at the top of Sunnymead Road on the eastern side, with a mix of affordable, social/state and private properties being built. This includes some properties offered under its shared equity scheme, where families and the foundation both take a share in the property, with the family increasing its stake over time.

House construction is continuing on the large site next to Tāmaki College. Civil construction on the remaining sites is finished and all new homes are expected to be completed in 2020.

The new pocket park on Aveline Place is now open for community use, with the naming process underway.



## Overlea neighbourhood **B**



Over 130 new homes will be built in the Overlea neighbourhood. Nine houses have been completed in Overlea Central to date, with six more under construction by Mike Greer homes. Consent for more is being sought.

Construction of 16 houses has also begun in Overlea South. Go to [classicbuilders.co.nz](http://classicbuilders.co.nz) for more information. A plan for Overlea North is currently being developed.

## Line-Epping neighbourhood **D**



The Line/Epping neighbourhood development includes a mixture of state, affordable and private market homes in a variety of styles.

Civil works are expected to be completed during winter, with house construction likely to begin in late 2019.

Three existing houses have also been moved to Line Road adjacent to Taniwha Reserve from elsewhere in the neighbourhood. These will be fully renovated and refurbished, with builders set to finish by the end of the year.

The extension of Eastview Rd is also due to open late this year, linking the Line/Epping Neighbourhood with Glen Innes town centre.

## Northern Glen Innes neighbourhood **F**

Development partner Creating Communities is building an enclave of ten two and three-bedroom, architect-designed houses on Castledine Crescent in Northern Glen Innes. Five of the homes are connected by a series of walkways and boardwalks that meander through a landscaped native bush setting. Go to <https://creatingcommunities.co.nz/blog/ten-out-of-ten/> for more information.

## Wai-O-Taiki Bay neighbourhood **G**



Creating Communities also have a number of recently completed homes available in Wai-O-Taiki Bay on Fernwood, Inglewood and Taniwha Streets. These expansive four-and-five bedroom family homes offer two living areas, are within easy walking distance to Sacred Heart College and many feature water views over Wai-O-Taiki nature reserve and across to Half Moon Bay. Go to <https://waiotaiki.co.nz/> for more information.

### Farringdon Street development

This small development is located at 71-75 Farringdon Street. Three old houses have been replaced by 11 new state homes, with tenants in the process of moving in.

## POINT ENGLAND

### Hinaki neighbourhood **E**

Approximately 50 state homes along parts of Pilkington Road, Tripoli Road, Torino Street, Parata Street and Hinaki Street will be developed into a mix of state, affordable and private market homes. Civil work on stage one is due to be finished during winter.

Hinaki Street will be closed until the end of winter, with work scheduled to replace a major water main that services the area.

Demolition on stage two at the front of the site is complete, with civil works scheduled to begin in late 2019. Demolition is underway on stages three and four at the back of the site, with civil works scheduled to start later in the year.

### Tamatea Avenue development

This small development is located at 7-11 Tamatea Avenue and involves the redevelopment of three existing houses into 10 new homes, which are now complete.



The terraced houses will see state house tenants moving in during the winter months.

## PANMURE

### Derna/Tobruk neighbourhood **C**



Approximately 100 new houses will be built in the Derna/Tobruk area, with 19 new homes planned for the first stage around Sollum and Tobruk roads. Houses in the first and second stage have now been demolished.

Rehousing is underway in Stage 3 and demolition will commence late 2019. All new homes in the Derna/Tobruk neighbourhood are expected to be completed by the end of 2021.

### Armein neighbourhood **H**

The Armein neighbourhood is expected to include approximately 60 new warm, dry homes. These will be a mixture of state, affordable and private market houses.

House demolition is complete, with civil works likely to commence late 2019. A development partner is yet to be selected.

A development strategy about how the area will look in the future is currently being worked on.



# HUNDREDS ATTEND JOBS & SKILLS OPEN DAY

.....

The Tāmaki Jobs & Skills Hub played host to more than 200 people at its first ever open day in the Glen Innes town centre.



It was attended by jobseekers, prospective employers, community groups and other providers, who learned more about the hub's work helping match up local Tāmaki people with organisations looking for new employees. Last year the hub placed 220 people into work.

The successful event saw guest speakers talk about

the construction industry, while children from Point England School mapped out their vision for the future of Glen Innes.

And outside, there was plenty of action with cultural performances and Tāmaki Regeneration staff looking after the sausage sizzle.

**Drop into the hub at 54 Mayfair Place, Glen Innes between 9am–3pm weekdays, or phone 0800 562 482 to find out more.**





# TĀMAKI HOUSING RECEIVES PRESTIGIOUS AWARD

.....

The Australasian Housing Institute (AHI) has honoured Tāmaki Housing’s efforts to engage with its tenants.

Tāmaki Housing was a co-winner in the Excellence in Social Housing category, alongside the Te Puni Kōkiri/Kōkōhinau Marae Papakainga partnership.

The award was presented by Urban Development Minister Phil Twyford to Tāmaki Housing general manager Neil Porteous at a gala dinner in Wellington on 6 June.

The awards provide an opportunity to showcase social housing success stories and highlight the difference social housing professionals make to people’s lives.

Porteous says Tāmaki Housing - Tāmaki Regeneration’s tenancy arm - has made a huge effort to engage with tenants since it took ownership of 2800 state houses in Panmure, Point England and Glen Innes on April 1, 2016.

“Tāmaki Housing has adopted a community-based model where we put our tenants at the heart of everything we do.

“We have built the trust of the community by listening to them, delivering on what we say we will do and making a genuine effort to work with our tenants.

“Fundamental to this is employing tenancy managers either from the Tāmaki community, with strong connections to the community, or who have a lived experience of state housing.”

Porteous says the organisation does not take this trust for granted and works hard to maintain and build our relationships for the long-term benefit of Tāmaki.

Engagement with the community takes many forms, including involvement in local events and working with Tāmaki Regeneration’s Community Liaison Committee, which includes tenants who are also members.

Surveys of Tāmaki Housing tenants are also regularly conducted, with a gold-standard 88% tenant satisfaction rating achieved recently.

Tāmaki Housing was also a finalist in the Leading



Phil Twyford and Selina Patia

Community Engagement Practice category at the AHI awards, while tenancy manager Selina Patia was a finalist in the Inspirational Team Member category.

# TĀMAKI NOTICES

## COMMUNITY LISTINGS

### SPOTS AVAILABLE AT GI KINDY

Glen Innes Kindergarten is currently accepting enrolments for littlies aged from two to four. Run by a passionate team of educators, the centre offers morning, afternoon and full day options.

Learning at the kindergarten is focused on five different principles - wellbeing (mana atua), belonging (mana whenua), contribution (mana tangata), communication (mana reo) and exploration (mana aoturoa).

As well as being involved in the local area, we value deep connections with parents, whānau and community to gain the best learning outcomes for our children.

Pop in to say hello and don't forget to ask about the 30 hours free ECE entitlement

Contact: (09) 528 4113, [gleninnes@aka.org.nz](mailto:gleninnes@aka.org.nz) or drop by at 71 Taniwha St, Glen Innes.

Morning: 8:30AM-11:30AM (MON-FRI)  
Afternoon: 11:30AM-2.30PM (MON-FRI)  
Full Day: 8.30AM-2:30PM (MON-FRI)  
Closed: School and Public Holidays

### TE WHARE PIRINGA AVAILABLE FOR HIRE

Looking for an affordable venue to host your next local event?

Then check out Te Whare Piringa – Our Place at 29A Fenchurch Street in Glen Innes.

Formerly a disused scout hall, it is now run locally for the community to enjoy.

Operating hours are 6am-10pm, seven days per week. Hourly hire is \$25 per hour

Email [tewharepiringa@gmail.com](mailto:tewharepiringa@gmail.com) or call manager Samantha McGee-Repia on 020 4161 9371 for more information.

## THE TĀMAKI JOBS & SKILLS HUB IS READY TO HELP

The hub is now located at 54 Mayfair Place (the old ASB building) in the Glen Innes town centre.

Pop in for a cuppa and a chat about upskilling, getting a driver licence, work-related courses and job opportunities.

**Looking for a job? Come in and see us, call us or send us an email.**

**TĀMAKI**  
JOBS & SKILLS HUB

54 Mayfair Place, Glen Innes  
Open: Monday to Friday, 9am-3pm  
Email: [jobshub@tamakiregeneration.co.nz](mailto:jobshub@tamakiregeneration.co.nz)  
Phone: 0800 JOB HUB

Tāmaki Jobs & Skills Hub is part of the Tāmaki Regeneration Programme

## JOBS AT TRC

TRC has a number of jobs you may be interested in applying for. If you are keen to work for a team that is passionate about Tāmaki check out: [tamakiregeneration.co.nz/recruitment](http://tamakiregeneration.co.nz/recruitment)

## THIS MAGAZINE IS FREE

Sign up for your free issue at:  
[tamakiregeneration.co.nz](http://tamakiregeneration.co.nz)

**EMAIL COMMUNITY LISTINGS TO: [communications@tamakiregeneration.co.nz](mailto:communications@tamakiregeneration.co.nz)**



TĀMAKI



TĀMAKI REGENERATION



@TĀMAKIREGEN



TAMAKIREGENERATION.CO.NZ

PEOPLE \

PLACE /

POSSIBILITIES \_



# TAMAKI

TAMAKIAKL.CO.NZ

PANMURE \

GLEN INNES /

PT. ENGLAND \_