

# MAI TĀMAKI

TĀMAKI IS AN AWESOME PLACE TO LIVE



**NEW HOMES**

.....

**NEIGHBOURHOOD  
UPDATES**

**LOCAL PEOPLE**

.....

**MARSIC FISH  
SHOP**

**URBAN DESIGN**

.....

**GLEN INNES  
TOWN CENTRE**



# TĀMAKI



With a rich history, inclusive community spirit and central location, Tāmaki stands out for its wealth of potential; both of people and place. It has great transport links and is only 12 minutes from the CBD by train.

It has two town centres, Sylvia Park Shopping Centre on its doorstep and safe swimming beaches nearby. Take a look through Mai Tāmaki to discover why this is a great place to live, work and raise a family.

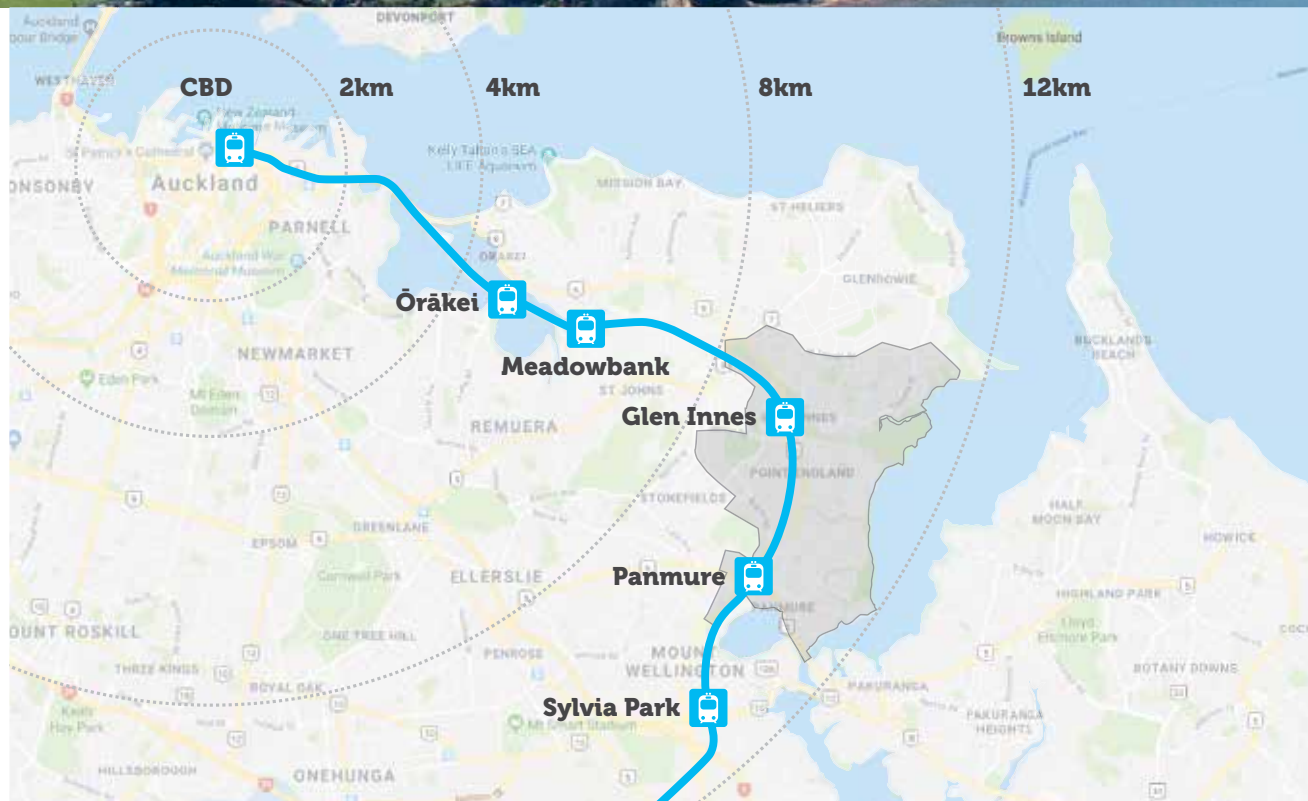


**AUCKLAND CBD**

**MISSION BAY**

**KOHIMARAMA**

**ST HELIERS**





# WELCOME



John Holyoake

Welcome to Mai Tāmaki. This new-look local magazine is brought to you by Tāmaki Regeneration (TRC), the company managing the 20-year programme to regenerate the suburbs of Glen Innes, Point England and Panmure. This ambitious project is the largest of its kind in New Zealand.

While we will keep you up-to-date on the regeneration programme, Mai Tāmaki is also about celebrating the great things going on in the area and telling the stories of the

awesome communities that live here.

In the two years since TRC took over the ownership and management of the state houses in Tāmaki, we've been busy building warm, dry homes and creating sustainable job opportunities for local people.

Nearly 300 state, affordable and private market homes are now completed and about 650 houses are under construction. Through the Tāmaki Jobs and Skills Hub, we are proud to

have reached the milestone of supporting more than 300 people into work.

Looking forward, there are also plans to revitalise the Glen Innes and Panmure town centres. These upgrades will create more of a buzz at the shops, as well as generate more local jobs.

John Holyoake,  
TRC chief executive

## HIGHLIGHTS

6



### Jobs

Meet Vincent, one of the people who got a job in construction through the Tāmaki Jobs and Skills Hub.

9



### Local people

Marsic Fish Shop is a GI institution, but do you know the story behind the family run business?

16



### New homes

Check out the neighbourhood development updates to see what's coming up in Tāmaki.

21



### Urban design

Regeneration manager Joanna Brain tells us about the plans to revamp Glen Innes town centre.

**Cover photo** East Cook Island Community Culture Group at Movies in Parks at Pt England Reserve.  
**Opposite** The creativity of Glen Innes was celebrated during April's street art event Bradley Lane Illuminated.



# GOING PLACES IN CONSTRUCTION

.....

The Tāmaki Jobs and Skills Hub is helping local people like Vincent Elliott upskill and achieve their career goals.

Vincent Elliott is stoked to have landed a job in construction. He started working as a labourer and a machine operator in Glen Innes in February.

"I wanted to try something new so I checked with the Tāmaki Jobs and Skills Hub to see if they could help me out and I'm really glad I did."

Vincent used to work for a rubbish collection company. Before that, the 28-year-old had a job in construction, but he knew he needed to upskill if he wanted to progress in the career.

The Tāmaki Jobs and Skills Hub helped him gain a special machinery licence called a wheels, tracks and rollers licence.

"Getting that licence was one of my main goals. Without it I couldn't operate any of the machines used in civil construction.

"I'm really thankful to the staff at the hub. They made me feel more confident and helped me with things like interview preparation and writing my CV," he says.



Vincent now works for Cornerstone Construction, a subcontractor to HEB Construction which has a large development site on Fenchurch Street.

The best thing about the new job is the people, Vincent says. "They're good to work with and they like to have a laugh. I want to stay in civil construction because this is the type of work I really enjoy."

Billy Renney, who is the HEB site supervisor, says Vincent is a great team member. "He gets on with the job and puts in the hard work. He's always volunteering to do extra hours and he's really interested to learn."

Andy Cowan, who is the training manager at the Tāmaki Jobs and Skills Hub, says Vincent has the right attitude.

"We've had nothing but positive feedback about him. The HEB guys are teaching Vincent how to use all the machinery and they've made him feel welcome as part of the team. The next step will be to help him pathway into an apprenticeship so he can be fully qualified."



## TĀMAKI JOBS AND SKILLS HUB

.....

- More than 300 Tāmaki people have found work through the Tāmaki Jobs and Skills Hub.
- The hub has been running since 2013. It helped 95 local people into work in the last financial year.
- The hub helps job seekers get work ready by offering support with writing CVs, providing career advice, applying for jobs online, driver licence training, job matching, and mentoring.
- The range of industries include construction, logistics, manufacturing, hospitality, retail and administration, among others.



**The team:** Stacey Ahokava, Sheam Achmat, Victoria Taupau, Alice Taupau.

### Visit Us:

54 Mayfair Place, Glen Innes

### Open:

Monday to Friday, 9am-3pm

### Email:

jobshub@tamakiregeneration.co.nz

### Phone:

0800 JOB HUB

**TĀMAKI**  
JOBS & SKILLS HUB



# NEW LIFE FOR OLD HOMES



Three former state houses are getting a makeover as part of a project to retain some of Tāmaki’s built heritage.

The two storey weatherboard state homes are considered an iconic design. They were built in the 1950s and 1960s with native New Zealand timber, which was typical of state housing of the era.

The houses were moved from Epping Street to Line Road, across a TRC development site, in March. They can now be found on a site where one state house once sat. Over the next year, the houses will

be renovated and the living areas will be extended with native timber flooring sourced from other state houses in the area.

This reuse approach is a more sustainable approach to redevelopment as it reduces the amount of building materials sent to landfill. TRC is considering renovating other state houses at future development sites as a way of remembering the past.

*\*Go to the Tāmaki Facebook page to watch a video of the house move.*







## **FISH SHOP, A FAMILY AFFAIR**

.....

One of Glen Innes' best-known businesses, Marsic Brothers, will be keeping us in fresh fish for a few more years yet, with the next generation of the family taking their turn behind the counter.



Croatian brothers Wally and Ivan Marsic opened the doors of their fish shop in Glen Innes in 1967. When an old fish shop came up for sale in Glen Innes, Wally and Ivan saw a golden opportunity. "The owner wanted £2000 for it," Wally says.

"But Ivan had just bought a house and my savings were about £1600, so we offered that – and got it. We've been here ever since, and we've never had an argument.

**"WE MADE A BIG SIGN SAYING 'UNDER NEW MANAGEMENT' AND USED TO DRESS IN BOW TIES, WHITE SHIRTS AND BLACK PANTS."**

.....

"Brother Ivan had a big American car, a Ford Customline 1957, so we used that to transport the fish from the city market, because we didn't have any money for a van. We took the back seats out and put tins in the back and brought the fish from the city market to the shop that way.

"The fish shop took off so quickly that we had to get a trailer too to manage all the fish. Then once we made some money we bought a ute," says Wally. "We would clean the fish at the market while we waited for the boats to unload, then take the fillets back to the shop in the car."

Ivan retired last year after 50 years in business with his brother. Wally's pleased that his



son Daniel, 33, and daughter Stephanie, 29, have now joined him at the shop. Stephanie has two sons, aged one and four. They haven't shown any interest in the shop yet, but Wally wouldn't mind if they decided one day to become the third generation of the Marsic family running the business.

The shop is busier than ever, and their customers have hardly changed. "They are like family", Wally says, and the children and grandchildren of their original customers come in each week for regular orders of fish.

The shop has a far-reaching reputation, Wally says. "We have regular customers from Warkworth, St Heliers, Kohimarama, Newmarket,



Pakuranga, everywhere really, and of course, the locals.”

Wally still goes to the city fish auctions every weekday morning at 5.30am to bid for and bring back the day’s supplies – snapper, terakihi, kahawai, gurnard, salmon, hapuku, flounder. “Gurnard is really popular these days. A lot



of people buy it to cook, but it is lovely in fish and chips too,” he says.

Every morning, Wally and his son Daniel are behind the counter by 6:30am and the shop is busy as soon as it opens. “We have people turning up in their pyjamas and buying fish and chips. Some customers are coming home from work, some are going to work, and some are there because they’ve got hangovers and can’t sleep,” Wally laughs.

In amongst all this activity, the day’s fish has to be cleaned and filleted, the batter made, and the chips prepared for cooking. A couple of times a week, Daniel and Wally fire up the smokehouse and smoke fish for their customers using their special Croatian recipe. Wally says it’s just the right sort of wood, a bit of salt, and nothing else, “all natural, no preservatives”.

You’d think Wally would want to put his feet up on the weekend, but he’s been a keen bowler for as long as he can remember and is the proud holder of 40-odd club titles, about 15 Auckland titles and two New Zealand titles. Ivan is also an enthusiastic bowler and the pair have won various competitions together. Daniel, however, is a keen cricketer. He coached and managed teams and clubs before joining his father Wally in the fish shop last year.

“I’m enjoying the change,” Daniel says. “It’s very busy and the best thing has been learning what Dad has been doing over the last 50 years and hearing the stories from customers.



“The personalities and people coming in are always interesting; there’s such a wide range of people and cultures all in the shop at the same time, all getting the same thing,” Daniel says.

When you read news stories and find Marsic Brothers used as a point of reference in Glen Innes, which is quite often, you realise just how well known they are.

### Marsic Brothers

47 Mayfair Place, Glen Innes  
[facebook.com/MarsicFishShop](https://www.facebook.com/MarsicFishShop)

\*Go to [waiotai.co.nz](http://waiotai.co.nz) for more local stories and information about the area.





# MOVIES IN PARKS 2018

.....

Grey skies didn't dampen the excitement for people who headed to Auckland Council's Movies in Parks event to watch family movie Coco at Point England Reserve on 31 March.

Thanks to Ngāti Paoa for opening the event and to the East Cook Island Community Culture Group for the pre-show entertainment.







# TĀMAKI YOUTH ON THE WORLD STAGE

.....

Twenty-five people from Ruapōtaka Marae youth programme thrilled the crowds with their fusion dance performance at an international festival in the Philippines.

Taking part in Dinagyang Festival in January has brought Dakota Harris and Jordan Makea closer to their own cultures.

The Tāmaki College graduates are part of a youth group called Te Āmiorangi Hōtaka Rangatahi from Ruapōtaka Marae who perform a blend of kapa haka and Cook Island dance.

Jordan is both Cook Island and Māori and has a lot of experience performing in kapa haka groups. He was particularly interested in the fact this group gave him the chance to also connect with his Cook Island heritage.

Dakota Harris, who is of Māori and Samoan descent, says the dance fusion was a real drawcard for her too. "I wanted to learn more about my roots while learning about a new culture."

Becoming part of the youth group has been a real confidence boosting experience for the seventeen-year-old. "I used to be quite shy when I met new people but now I feel like I can be the real me," she says.

Jordan, who is 19, says the talent at the festival blew him away.



"It's my passion to travel and perform. The way that people in the Philippines perform is the best I've ever seen. The teams used amazing choreography and so many props."

Being in the Philippines was an eye-opening experience, he says. "I saw first-hand the way people lived in the Philippines. It made me humble myself because they are less fortunate than us."

Ruapōtaka Kairuruku (youth co-ordinator) Ann Makea says the experience highlighted how important it is for young people to be connected to their cultural roots.

"Some of them relayed that they felt ten feet tall and could do anything. That is the best result we could've asked for.

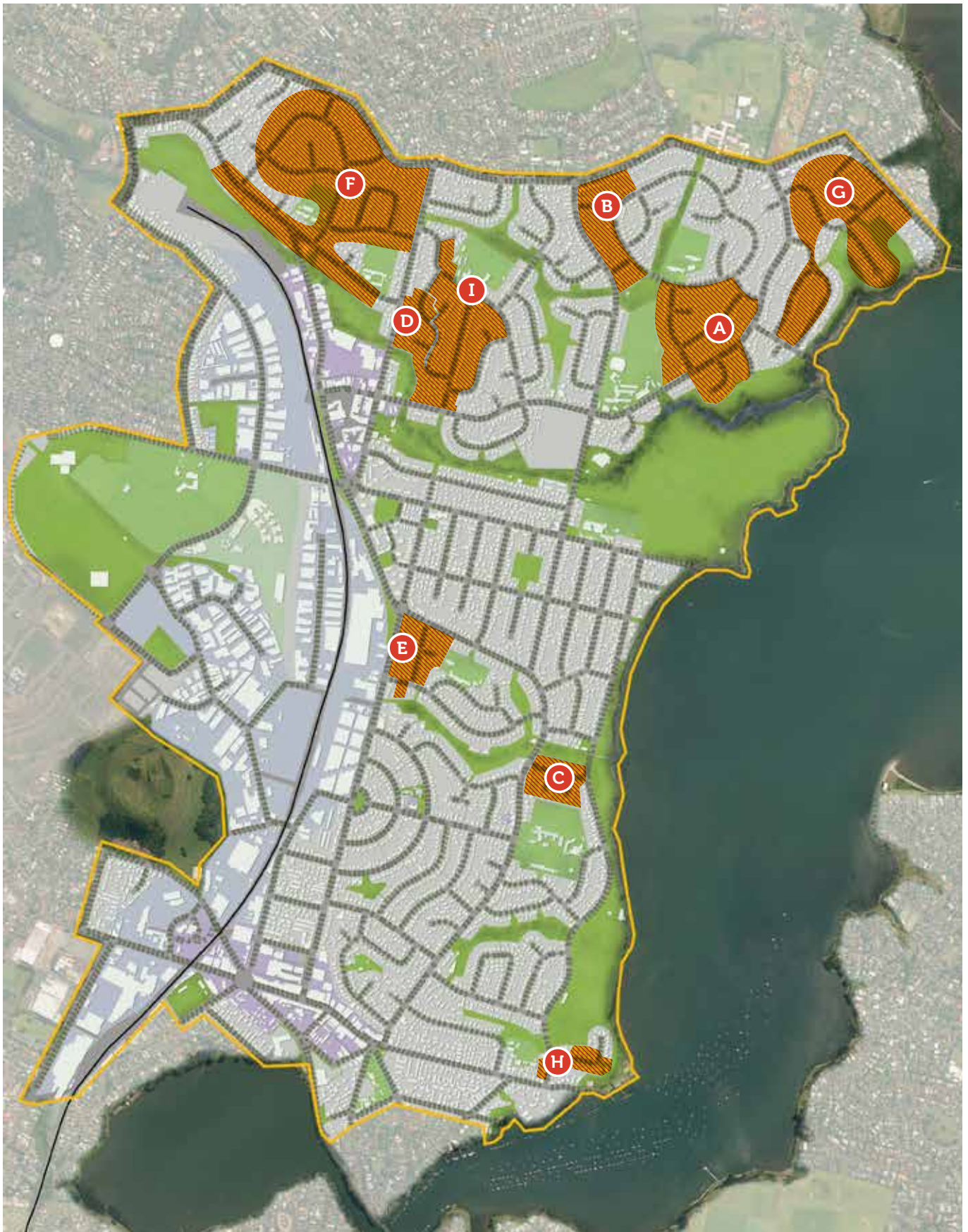
"The group got to engage with lots of other youth during the ten-day trip and we were privileged to meet with the mayors of two provinces, as well as the local governor.

"Our young people carried themselves very well as ambassadors for Aotearoa and were highly commended for their performance at festival. They even featured on the front page of the National Bulletin, in the local paper and on television."

The 25 youth and five support people who went to the Philippines held raffles, sought sponsorship and held a hangi dinner for sponsors in order to get everyone over to the festival.

Sponsors included Pak'n Save Glen Innes, Tom Ryans Transport, Tāmaki Regeneration Company, Creating Communities Limited, project management company Xigo, Te Wananga o Aotearoa and Te Puni Kokiri, among others.









# REGENERATION UPDATE

.....

TRC takes a neighbourhood-by-neighbourhood approach to understand the specific needs, opportunities and challenges of each area and the families who live there.

Development work is well underway in Glen Innes, with early construction activities also starting in Point England and Panmure.

We understand construction works can be very disruptive. We are committed to working with the local community and will make sure residents are informed about what's happening at each stage of the programme.

For more information about our neighbourhoods and developments, please visit: [tamakiregeneration.co.nz](http://tamakiregeneration.co.nz)

## GLEN INNES

.....

### Fenchurch neighbourhood **A**



Approximately 400 new homes will be built in the Fenchurch neighbourhood over the next three years. Over 80 new homes have now been completed and the residents who have moved into them are enjoying their warm, modern homes. Based on a suggestion from residents, an early learning centre

called Glenbrae KIDS was opened in Fenchurch in 2015. The old scout hall was also refurbished and is now a community hall called Te Whare Piringa – Our Place.

House construction is continuing on the large site next to Tāmaki College and on the Fenchurch Park site directly across the road, with the first houses now completed. Civil construction is currently underway on the remaining sites and all new homes are expected to be completed by late 2019. Work is expected to start on a new park on Aveline Place in late 2018.

### Overlea neighbourhood **B**



Resource consent has been granted for 137 new homes to be built in the Overlea neighbourhood. The phased building programme will see approximately 70 of these homes being constructed in the first stage, with house building expected to start mid-2018.

The second stage in Overlea Central will include approximately 50 new homes with house building

expected to begin mid-2018. The masterplan for Overlea North is currently being reconsidered due to changes in the development boundaries.

### **Line/Epping neighbourhood** D



Following neighbourhood sessions with residents, the Line/Epping neighbourhood includes the construction of 120 new, quality homes and new improved connections between the existing neighbourhood and Taniwha Reserve.

Civil construction is now underway with house building expected to start in late 2018. Three existing houses have also been moved to the edge of Taniwha Reserve from elsewhere in the neighbourhood. These will be fully renovated and refurbished. All the new homes are expected to be completed in late 2020.

### **Epping/Evandale neighbourhood** I

TRC has begun conversations with residents in Epping, Evandale and Heatherbank streets to find out more about their needs and aspirations for their area. Community meetings took place in February and March 2018 and the feedback gathered is being used to develop a regeneration plan for the neighbourhood.

### **Northern Glen Innes neighbourhood** F



TRC's development partner Creating Communities has nearly completed its northern Glen Innes housing project. There have been steady sales of The Parkside Terraces which border Eastview Reserve. These properties have appealed to down-sizers, investors and professional couples alike. With only one end terrace unit available, don't miss your chance to secure a quality property in a great location.

### **Wai o Taiki Bay neighbourhood** G

The first homes in Wai O Taiki Waterside have come onto the market and several homes have already been purchased. Located in Fernwood Place, these homes are situated on a private cul-de-sac with a nature reserve on three sides. Several of the four-bedroom family homes have unobstructed views onto the reserve and out across the Tāmaki Estuary. A further six, large family homes are nearing completion on Taniwha Street and eight homes have been completed on Lyndhurst Street. Visit [waiotaiki.co.nz](http://waiotaiki.co.nz) for information or drop by the Creating Communities sales office at 125 Apirana Ave for a chat.

### **Farringdon Street development**

This small development is located at 71-75 Farringdon Street and includes three existing houses which will be redeveloped into approximately 11 new homes.

The new homes are expected to be terraced houses, spread evenly across the three sites. House demolition is complete and civil construction is currently underway.

### **POINT ENGLAND**

.....

### **Hinaki neighbourhood** E

Over the next four years, approximately 50 housing sites along parts of Pilkington Road, Tripoli Road, Torino Street, Parata Street and Hinaki Street will be developed into a mix of state, affordable and private market homes. The first houses have now been demolished with construction expected to begin on the first stage in mid-2018. The neighbourhood plan also includes a new street layout and improvements to Boundary Reserve.

### Tamatea Avenue development



This small development is located at 7-11 Tamatea Avenue and includes three existing houses which will be redeveloped into approximately 10 new homes.

The new homes are expected to be terraced houses, spread evenly across the three sites. Construction activities are expected to start by mid-2018 with the new homes completed in 2019.

### PANMURE

.....

#### Derna/Tobruk neighbourhood **C**



Approximately 100 new homes will be built in the Derna/Tobruk area with 19 new homes planned for the area around Sollum and Tobruk roads. Houses in this area have now been demolished, with construction activities expected to begin in mid-2018. All new homes in the Derna/Tobruk neighbourhood are expected to be completed by the end of 2020.

A health and education hub at Tāmaki Primary School is also planned for this neighbourhood. The hub will deliver services which make sure children have the best possible start in life. It will provide early childhood education, family health and wellbeing services and will include spaces that can be hired by the community.

#### Armein neighbourhood **H**

The Armein neighbourhood is expected to include approximately 80 – 90 new warm, dry homes. These will be a mixture of state, affordable and private

market homes built in a range of styles, including houses, apartments and duplexes.

Construction is expected to take place in three stages, starting in lower Dunkirk Road and then progressing into Armein Road. House demolition is currently underway in lower Dunkirk Road and Armein Road.

### GREEN LIGHT FOR PANMURE TOWN CENTRE PLAN

.....

A plan to refresh Panmure town centre was approved by Auckland Council in March.

The plan is being led by Panuku Development and sets out what's ahead for the town centre for the next 15-20 years. It focuses on creating a thriving and vibrant main street with improved transport connections.

This will help to connect the community with Panmure's local facilities and make the most of its unique location between two stunning natural features - Mount Wellington and Panmure Basin.

A new multi-purpose community facility is planned for the town centre where the community can access key services such as a library and a community centre. Visit [panuku.co.nz/panmure](http://panuku.co.nz/panmure)

### Land blessings



TRC staff and community members at the Derna/Tobruk land blessing in March.

In preparation for building houses, land on TRC's redevelopment projects is blessed by a local kaumatua before the earth is turned. The karakia (blessing) takes place at dawn and acknowledges the historical connection of mana whenua to the land that lies within their hapu and iwi boundaries.

Most recently, land was blessed in the Derna/Tobruk, Farringdon and Line/Epping neighbourhoods before civil construction started.

# NEW HOME HANDY TO EVERYWHERE

.....

Long-time Glen Innes resident Judy Putohe just loves her new, warm modern home on Taniwha Street.



Judy Putohe couldn't wait to shift into her new Tāmaki Housing property. "When I moved in, all my children came around. They were overwhelmed by how nice it was and so was I. I can't believe I have two bathrooms now."

Judy shares the three-bedroom home with two of her grandchildren. She likes the open plan design of house, but the most important thing is that it isn't cold.

"I can leave the windows open and it's still warm and dry even if it's raining outside. I've noticed that my power bill is cheaper now too."

Judy, 63, grew up in Hamilton but has lived most of her life in Glen Innes. She loves the

location and wouldn't live anywhere else.

She has a big whānau with six children, 21 grandchildren and one great grandchild, most of whom live nearby. "Glen Innes is close to all my family. It's nice and handy to town and it's easy for me to take the kids to places like Mission Bay."

Her memories of her previous house on nearby Farringdon Street are a bit mixed. "I liked the old house because it had a big section where the kids could play. I also miss my old neighbours."

But the big drawback of the old house was how cold it was, Judy says. "It was like an icebox over winter. It wasn't insulated so mould was a problem. We used

to sleep in the lounge because it was the only warm room in the house.

"My kids and I got the flu a lot and had problems with asthma. It also meant we had to go to the doctor's more often."

She thinks the plan to replace the old state houses in Tāmaki with new homes is a good thing, but initially she wasn't so sure.

"When I first heard about it I wasn't too keen. Then I thought 'oh well, times are changing, and you need to go with the changes'."

"I love my new house. Yes, the new houses are closer together, but that also means you can know what's going on and look out for each other a bit more."

# A VISION FOR GLEN INNES TOWN CENTRE

.....

Planning is well underway on a twenty-year project to revitalise Glen Innes town centre. TRC’s regeneration manager Joanna Brain explains how the heart of northern Tāmaki is set to become more attractive and accessible for all.



Potential new look for Mayfair Place, Glen Innes



Joanna Brain

## **What is the vision for the Glen Innes town centre?**

We aim to create a hub which works for both the existing and the future communities of Glen Innes. You'll have this diverse range of retail shops, as well as cafes and restaurants, and there will be a real buzz around it.

## **Who are the main players in the plan?**

TRC is leading the twenty-year town centre regeneration project in partnership with Auckland Transport, Panuku, the Maungakiekie-Tāmaki Local Board and the Glen Innes Business Association.



**How have community members been involved in the plan?**

Over the past few years, TRC has hosted various community engagement activities about the town centre. This includes online surveys, workshops and community meetings.

People have told us they want to see better connections between different parts of the town centre, safer streets at night, more variety of shops, and cleaner, more attractive public spaces. This feedback has been included into the Glen Innes town centre development plan.

**Which projects will get off the ground first?**

Auckland Transport has plans to connect the train station to the town centre at Mayfair Place via an overbridge. In Mayfair Place there are plans to include a green space where people can sit and relax, eat their lunch and stay for a while.

Another big project involves upgrading the public space

around the Glen Innes Library and Te Oro Music and Arts Centre. The idea is to create better links from there to Maybury Reserve, making the reserve more accessible.

**What are the things you want to retain in Glen Innes?**

We have what we call our Glen Innes gems, which are well established businesses. People come into the town centre to go to places like the local butchers, the fish and chip shop, the shoe repair shop. At the heart of our retail strategy is the plan to retain the shops which are so well regarded and to build on that support.

**How does the upgrade of the town centre fit into the overall regeneration programme?**

It's an important part of the Tāmaki Regeneration Programme because town centres bring communities together and they are one of the things people think about when they buy a house. Upgrading the town centre will also attract new retail and commercial

businesses, which in turn will create more jobs.

**How does it tie in with the Panmure town centre upgrade?**

We are working closely with Panuku, who is leading the town centre upgrade in Panmure, to make sure the two town centres are complementary. Having said that, there are similarities in what we are both trying to achieve. In Panmure, you also need to connect the train station to the town centre and encourage people to spend more time at the shops and community facilities.

Residents will have opportunities to give feedback on specific parts of the plan as they progress. Visit [tamakiregeneration.co.nz/shaping-tāmaki-together](http://tamakiregeneration.co.nz/shaping-tamaki-together) for information.

1 Mayfair Place in Glen Innes.

2 The music and arts centre Te Oro on Line Road.

3 Dom Nash, the manager of Avon's Butchery.

4 John from John Pearce Footwear Repairs.

# TĀMAKI NOTICES

## WANT TO BUY AN AFFORDABLE HOME IN TĀMAKI?

TRC is building one to two bedroom affordable properties as part of the Tāmaki Regeneration Programme. These homes are sold for \$650,000 or less.

To qualify you'll need to be:

- A first time home buyer who has not owned property before
- A NZ citizen or Permanent Resident, residing in NZ
- Earning up to \$130,000 (as a couple or individual)

### Homes for sale

There are affordable homes for sale in Glen Innes which are being built by G.J. Gardner Homes, Mike Greer Homes and Classic Builders.

If you have any questions, please email [homes@tamakiregeneration.co.nz](mailto:homes@tamakiregeneration.co.nz)

If you are interested in purchasing an affordable home, fill out the online application form: [tamakiregeneration.co.nz/affordable-homes](http://tamakiregeneration.co.nz/affordable-homes)

## LOOKING FOR A JOB? WE'LL HELP YOU FIND ONE.

We connect Tāmaki job seekers with employers, training providers, and local jobs. The regeneration of Tāmaki will create thousands of jobs for Tāmaki people over the next 20 years. Already there are lots of work opportunities in Tāmaki in a range of areas.

### The Tāmaki Jobs & Skills Hub can:

- Match you to job opportunities
- Help you get training and gain new skills
- Support you while you are in a job.

## TĀMAKI JOBS & SKILLS HUB

54 Mayfair Place, Glen Innes  
Open: Monday to Friday, 9am-3pm  
Email: [jobshub@tamakiregeneration.co.nz](mailto:jobshub@tamakiregeneration.co.nz)  
Phone: 0800 JOB HUB

Tāmaki Jobs & Skills Hub is part of the Tāmaki Regeneration Programme

## JOBS AT TRC

TRC has a number of jobs you may be interested in applying for. If you are keen to work for a team that is passionate about Tāmaki check out: [tamakiregeneration.co.nz/recruitment](http://tamakiregeneration.co.nz/recruitment)

## THIS MAGAZINE IS FREE

Sign up for your free issue at: [tamakiregeneration.co.nz](http://tamakiregeneration.co.nz)

**3 & 4 BEDROOM HOMES SELLING NOW**

Enjoy an exceptional coastal lifestyle so close to the heart of Auckland City



**WAI-O-TAIKI**

WATERSIDE

VISIT OUR WEBSITE [WAIOTAIKI.CO.NZ](http://WAIOTAIKI.CO.NZ)